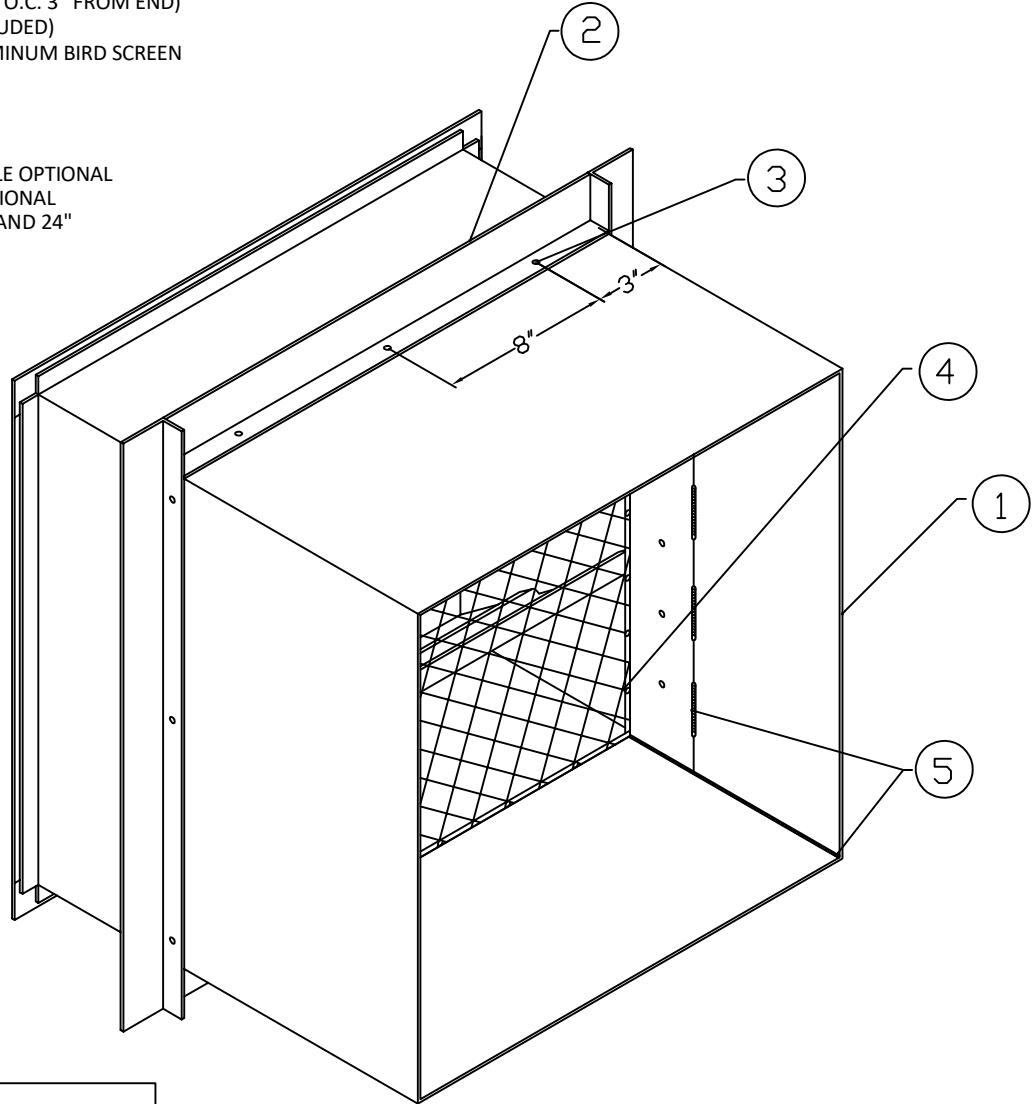


**STANDARD CONSTRUCTION**
**PARTS:**

1. ALUMINUM SLEEVE (1/8" ALUMINUM SHEET 3003 H-14)
2. ALUMINUM PERIMETER ANGLE 2" X 1" X 1/8"
3. 1/4" X 1" HWH SS SCREWS (8" O.C. 3" FROM END)  
(FIELD INSTALLED - NOT INCLUDED)
4. 3/4" X .051" EXPANDED ALUMINUM BIRD SCREEN
5. WELD LINES

**NOTES:**

- ALL FOUR CORNERS WELDED
- ALUMINUM PERIMETER ANGLE OPTIONAL
- BIRD OR INSECT SCREENS OPTIONAL
- SLEEVE DEPTH BETWEEN 12" AND 24"
- DAMPERS OPTIONAL



JOB NAME:
LOCATION:
ARCHITECT:
ENGINEER:
CONTRACTOR:
CONTACT GRILLE TECH INC. FOR ADDITIONAL INFORMATION OR WITH SPECIAL REQUIREMENTS.  5101 NW 36TH AVE MIAMI, FL 33142 PHONE: 305-537-0053 FAX: 305-537-0064  WEB: WWW.GRILLETECHINC.COM EMAIL: SALES@GRILLETECHINC.COM

**WLF-DA15 SLEEVE**

 OPTIONAL SLEEVE INSTALLATION WITH BIRD SCREEN  
 OR INSECT SCREEN

DRAWN BY: MR	DATE: 08/25/17	SCALE: NOT TO SCALE	DRAWING NO. WLF-DA15
CHECKED BY: IG	DATE: 08/28/17	REVISION: 11/7/19	SLEEVE