

**STANDARD CONSTRUCTION**
**FRAME:**

HEAVY EXTRUDED ALUMINUM CONSTRUCTION.  
FRAME IS ASSEMBLED USING CORNER CLIPS TO ASSURE HAIRLINE  
MITERED CORNERS.

**ACCESS DOORS:**

MADE OF STUCCO EMBOSSED GALV-ALUM SHEET (AZ50) WITH A  
PERIMETER ALUMINUM CHANNEL AND 1"R-4.2 FOIL FACED  
FIBERGLASS BOARD FOR INSULATION AND SOUND ATTENUATION.

**FINISH:**

SKY-WHITE (STANDARD)

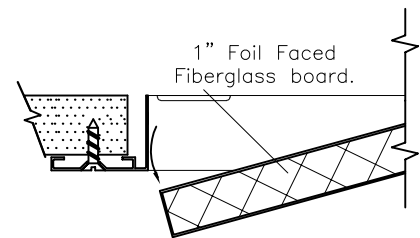
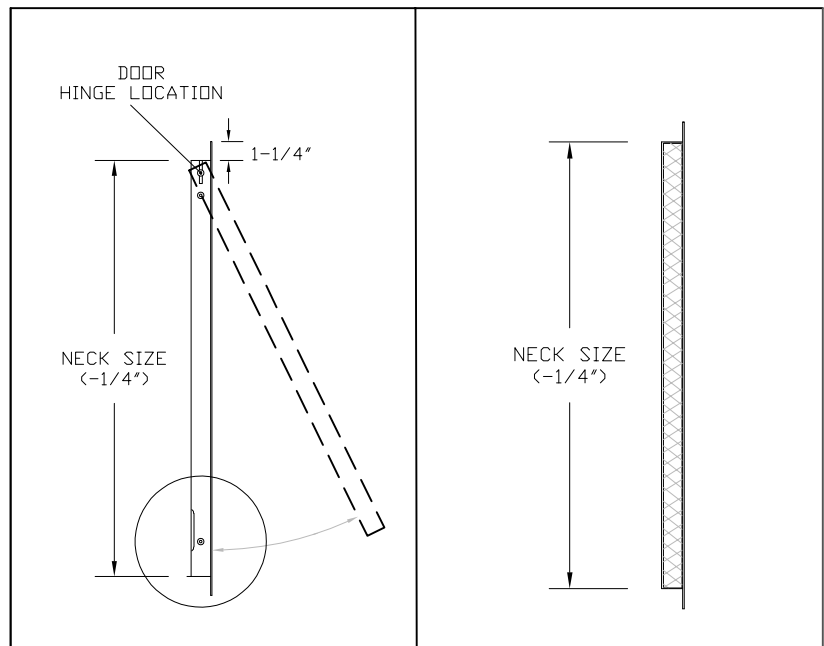
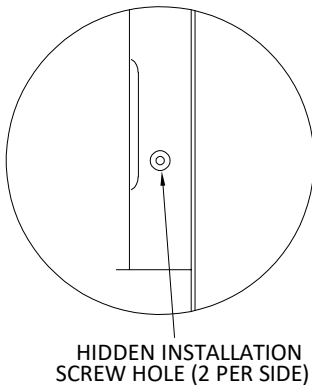
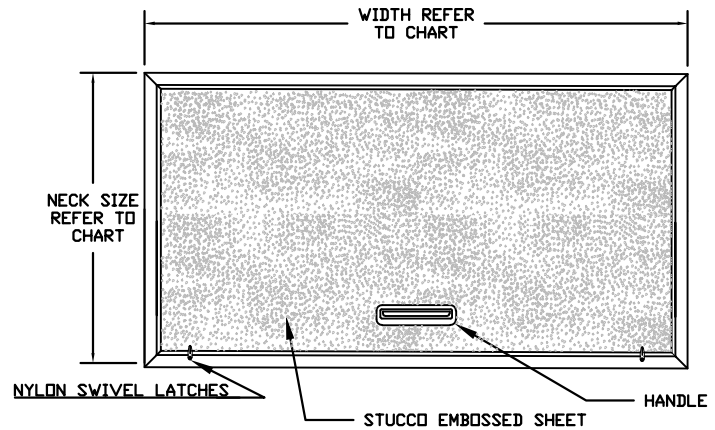
AXALTA SKY-WHITE 100% POWDER COATING GIVES AN ATTRACTIVE  
BRIGHT WHITE FINISH AND PROVIDES ADDITIONAL PROTECTION  
FROM AGING AND WEAR.

**OPTIONS:**

CUSTOM SIZES AVAILABLE

**SIZES AVAILABLE:**

53" X 24.5"  
48" X 24"



JOB NAME:
LOCATION:
ARCHITECT:
ENGINEER:
CONTRACTOR:
CONTACT GRILLE TECH INC. FOR ADDITIONAL INFORMATION OR WITH SPECIAL REQUIREMENTS.
5101 NW 36TH AVE MIAMI, FL 33142 PHONE: 305-537-0053 FAX: 305-537-0064
WEB: WWW.GRILLETECHINC.COM EMAIL: SALES@GRILLETECHINC.COM

**WAPIH**  
WALL ACCESS PANEL  
WITH INSULATION AND HANDLE

NOTE: ALL DRAWINGS SUBJECT TO CHANGE WITHOUT PRIOR NOTICE.

DRAWN BY: MR	DATE: 8/11/17	SCALE: NOT TO SCALE	DRAWING NO.
CHECKED BY: IG	DATE: 8/31/17	REVISION: 8/11/17	WAPIH