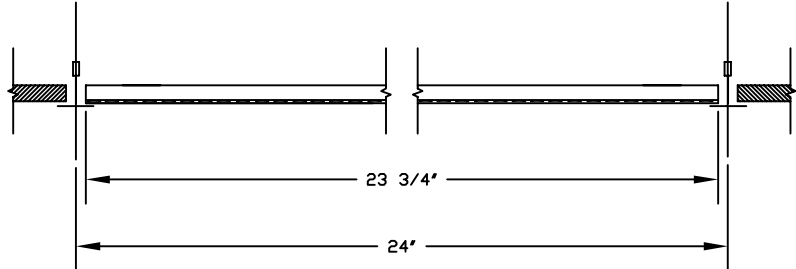
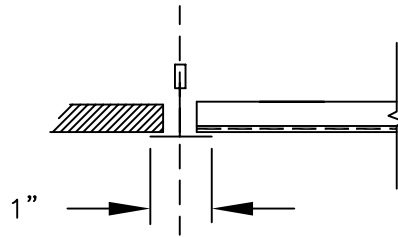


**STANDARD CONSTRUCTION**
**MATERIAL:**  
 MODEL PRN: STEEL

**FEATURES:**  
 PERFORATED PANEL HAS LEVEL FACE FOR T-BAR  
 CEILING APPLICATION

**FINISH:**  
 PERFORATED FACE PANEL: SKY-WHITE (STANDARD)

 AXALTA SKY-WHITE 100% POLYESTER POWDER  
 COATING GIVES AN ATTRACTIVE BRIGHT WHITE  
 FINISH AND PROVIDES ADDITIONAL PROTECTION  
 FROM AGING AND WEAR.

**T-BAR LAY-ON MOUNTING**


JOB NAME:
LOCATION:
ARCHITECT:
ENGINEER:
CONTRACTOR:
<p>CONTACT GRILLE TECH INC. FOR          ADDITIONAL INFORMATION OR WITH          SPECIAL REQUIREMENTS.</p> <p>5101 NW 36TH AVE          MIAMI, FL 33142          PHONE: 305-537-0053          FAX: 305-537-0064</p> <p>WEB: WWW.GRILLETECHINC.COM          EMAIL: SALES@GRILLETECHINC.COM</p>

**MODEL PRN**  
 PERFORATED FACE RETURN  
 (FACE PANEL ONLY)

DRAWN BY:	MR	DATE:	8/02/17	SCALE:	NOT TO SCALE
CHECKED BY:	IG	DATE:	8/30/17	REVISION:	8/02/17

DRAWING NO.

**PRN**



**PRN Perforated Return (Non-ducted)**

Neck Velocity (FPM)		100	200	400	600	800	1000	1200
Ps (In w.g.)		.002	.007	.028	.062	.110	.172	.248
12" x 12"	CFM	100	200	400	600	800	1000	1200
AK = .493	NC	<20	<20	<20	<20	<20	24	30
24" x 12"	CFM	200	400	800	1200	1600	2000	2400
AK = .493	NC	<20	<20	<20	<20	21	27	33
24" x 24"	CFM	400	800	1600	2400	3200	4000	4800
AK = .493	NC	<20	<20	<20	<20	24	30	36
48" x 12"	CFM	400	800	1600	2400	3200	4000	4800
AK = .493	NC	<20	<20	<20	<20	24	30	36
48" x 48"	CFM	336	672	1344	2016	2688	3360	4032
AK = .493	NC	<20	<20	<20	<20	23	30	35