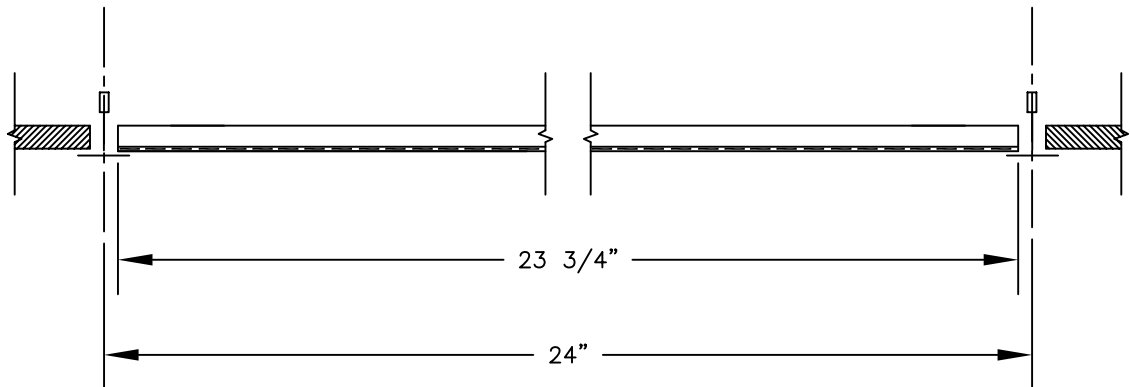
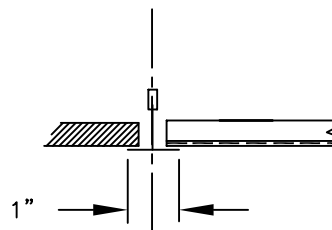


BASIC MODEL

- PRN (STEEL PANEL)
- PRNN (ALUM. PANEL)



T-BAR LAY-ON MOUNTING



FINISH:

- PERFORATED FACE PANEL: WHITE

MATERIAL:

- MODEL PRN: STEEL
- MODEL PRNN: ALUMINUM

NOTES:

- PERFORATED PANEL HAS LEVEL FACE FOR T-BAR CEILING APPLICATION.

TITLE:

SERIES PRN
PERFORATED FACE RETURN
(FACE PANEL ONLY)



| | | | |
|----------------|------------------|---------------|----------------------------|
| DRN BY: CV | DATE: 11/9/99 | SCALE: NTS | DRAWING NO. PD104-B |
| CKD BY: DJL | DATE: 2/15/00 | REV: A0 | |



PRN Perforated Return (Non-ducted)

| Neck Velocity (FPM) | | 100 | 200 | 400 | 600 | 800 | 1000 | 1200 |
|---------------------|-----|------|------|------|------|------|------|------|
| Ps (In w.g.) | | .002 | .007 | .028 | .062 | .110 | .172 | .248 |
| 12" x 12" | CFM | 100 | 200 | 400 | 600 | 800 | 1000 | 1200 |
| AK = .493 | NC | <20 | <20 | <20 | <20 | <20 | 24 | 30 |
| 24" x 12" | CFM | 200 | 400 | 800 | 1200 | 1600 | 2000 | 2400 |
| AK = .493 | NC | <20 | <20 | <20 | <20 | 21 | 27 | 33 |
| 24" x 24" | CFM | 400 | 800 | 1600 | 2400 | 3200 | 4000 | 4800 |
| AK = .493 | NC | <20 | <20 | <20 | <20 | 24 | 30 | 36 |
| 48" x 12" | CFM | 400 | 800 | 1600 | 2400 | 3200 | 4000 | 4800 |
| AK = .493 | NC | <20 | <20 | <20 | <20 | 24 | 30 | 36 |
| 48" x 48" | CFM | 336 | 672 | 1344 | 2016 | 2688 | 3360 | 4032 |
| AK = .493 | NC | <20 | <20 | <20 | <20 | 23 | 30 | 35 |