

STANDARD CONSTRUCTION
MATERIAL:

PAN IS 24 GAUGE SHEET METAL.
 AIR PATTERN CONTROLLERS ARE STEEL.
 FACE PLATE IS PERFORATED STEEL WITH 3/16"
 DIAMETER HOLES ON 1/4" STAGGERED CENTERS.

FEATURES:

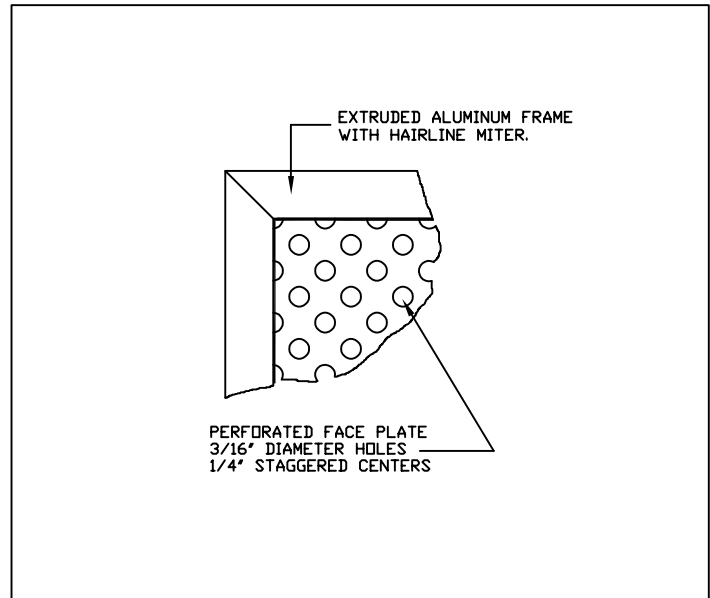
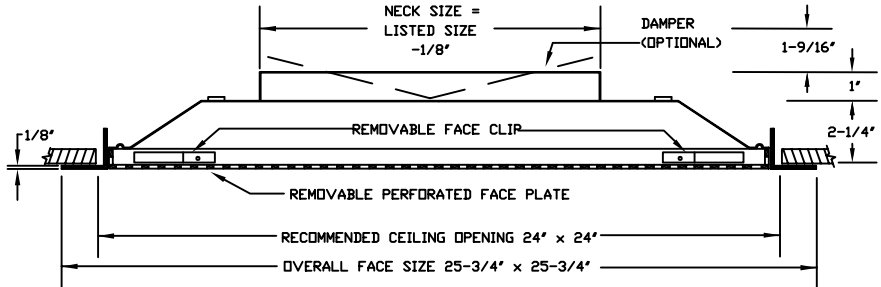
ALUMINUM FACE PLATE OPTIONAL.
 DAMPER OPTIONAL.
 ROUND INLET COLLAR (NECK) AVAILABLE IN
 6", 8", 10", 12", AND 14"

FACE SIZE: 24" X 24"

FINISH:

SKY-WHITE (STANDARD)

AXALTA SKY-WHITE 100% POLYESTER POWDER
 COATING GIVES AN ATTRACTIVE BRIGHT WHITE
 FINISH AND PROVIDES ADDITIONAL PROTECTION
 FROM AGING AND WEAR.



| |
|--|
| JOB NAME: |
| LOCATION: |
| ARCHITECT: |
| ENGINEER: |
| CONTRACTOR: |
| CONTACT GRILLE TECH INC. FOR ADDITIONAL INFORMATION OR WITH SPECIAL REQUIREMENTS. 5101 NW 36TH AVE MIAMI, FL 33142 PHONE: 305-537-0053 FAX: 305-537-0064 WEB: WWW.GRILLETECHINC.COM EMAIL: SALES@GRILLETECHINC.COM |

MODEL PRD-1/PRD-A-1

ROUND NECK PERFORATED
 RETURN SURFACE MOUNT

NOTE: ALL DRAWINGS SUBJECT TO CHANGE WITHOUT PRIOR NOTICE.

| | | | | | | | |
|-------------|----|-------|---------|-----------|--------------|-------------|---------|
| DRAWN BY: | MR | DATE: | 8/02/17 | SCALE: | NOT TO SCALE | DRAWING NO. | PRD-RND |
| CHECKED BY: | IG | DATE: | 8/30/17 | REVISION: | 8/02/17 | | |