

STANDARD CONSTRUCTION
FRAME:

6063T5 EXTRUDED ALUMINUM
NOMINAL WALL THICKNESS OF 0.081"
UNIVERSAL C-CHANNEL FRAME

BLADES:

6063T5 EXTRUDED ALUMINUM
NOMINAL WALL THICKNESS OF 0.081"
SPACED AT APPROX. 6" CENTERS

BEARINGS:

PERMANENTLY LUBRICATED OILITE BRONZE,
PRESS FIT INTO FRAME

GASKET:

1" x 1/4" FOAM GASKET

OPERATOR MOTOR:

HIGH-TORQUE ACTUATOR 24VAC (STANDARD)
110VAC (OPTIONAL)

FINISH:

MILL ALUMINUM

SIZE:

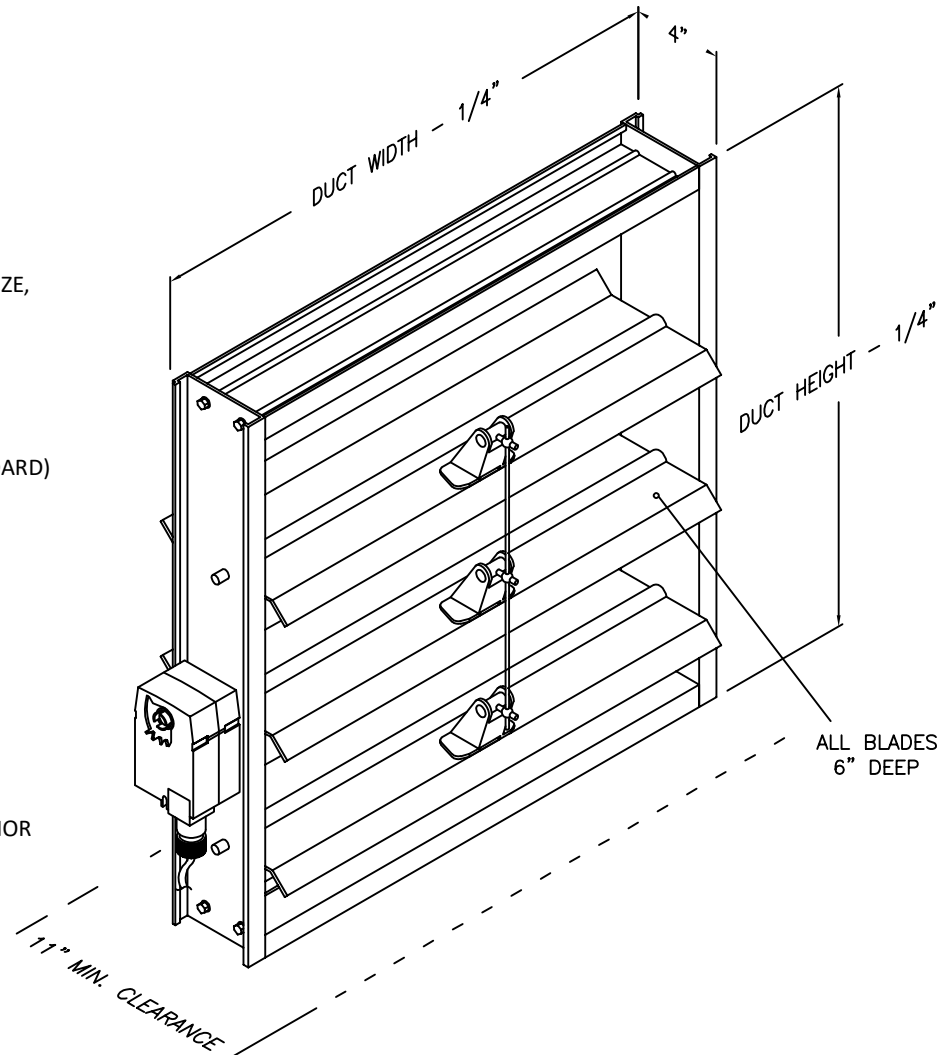
MINIMUM 12" W X 12" H

MAXIMUM DAMPER SIZE WITH SINGLE

MOTOR:
60" W X 48" H

FEATURES:

EXTRUDED ALUMINUM PROVIDES SUPERIOR
DURABILITY AND RESISTS CORROSION.
SOLID HARDWARE ALLOWS SMOOTH
OPERATION.



JOB NAME:
LOCATION:
ARCHITECT:
ENGINEER:
CONTRACTOR:
<p>CONTACT GRILLE TECH INC. FOR ADDITIONAL INFORMATION OR WITH SPECIAL REQUIREMENTS.</p> <p>5101 NW 36TH AVE MIAMI, FL 33142 PHONE: 305-537-0053 FAX: 305-537-0064</p> <p>WEB: WWW.GRILLETECHINC.COM EMAIL: SALES@GRILLETECHINC.COM</p>

MPBD

MOTORIZED PARALLEL BLADE DAMPER
POWER OPEN, SPRING CLOSE


Grille tech inc.

DRAWN BY:	MR	DATE:	1/28/19	SCALE:	NOT TO SCALE	DRAWING NO.	MPBD
CHECKED BY:	IG	DATE:	1/28/19	REVISION:			