

STANDARD CONSTRUCTION
FRAME:

EXTRUDED ALUMINUM.
 CORNER CLIPS ASSURE HAIRLINE MITERED CORNERS.
 DESIGNED TO ACCOMMODATE 1" THICK
 WIRE-REINFORCED WASHABLE HOG HAIR FILTER
 (FILTER PROVIDED)

BLADES:

ROLL FORMED ALUMINUM.
 ALL BLADES FIXED AT 45° IN ALL ALUMINUM CORE
 FRAME.

ACCESS DOORS:

MADE OF STUCCO EMBOSSED GALV-ALUM STEEL SHEET
 (AZ50) WITH A PERIMETER ALUMINUM CHANNEL AND
 1" R-42 FOIL FACED FIBERGLASS BOARD FOR
 INSULATION AND SOUND ATTENUATION

INSTALLATION:

ALLOW 2-1/2" CLEARANCE WHEN INSTALLING BELOW
 DAIKIN INDOOR UNIT.

FINISH:

SKY-WHITE (STANDARD)

AXALTA SKY-WHITE 100% POLYESTER POWDER COATING
 GIVES AN ATTRACTIVE BRIGHT WHITE FINISH AND
 PROVIDES ADDITIONAL PROTECTION FROM AGING AND
 WEAR.

STANDARD SIZES:

| FRAME CHART | | | | | |
|-----------------------|---------------------|---------|--------------------|---------|--------|
| | MODEL | WIDTH | HEIGHT | | |
| 1 | APRFFXSQ05/07/09/12 | 25 3/4" | 35 3/4" | | |
| 2 | APRFFXSQ15 | 31 3/4" | 35 3/4" | | |
| 3 | APRFFXSQ18/24/30 | 43 3/4" | 35 3/4" | | |
| 4 | APRFFXSQ36/48 | 59 3/4" | 35 3/4" | | |
| RETURN AIR CORE CHART | | | SERVICE DOOR CHART | | |
| | WIDTH | HEIGHT | | WIDTH | HEIGHT |
| 1 | 25 1/2" | 11 1/2" | 1 | 25 1/2" | 24" |
| 2 | 31 1/2" | 11 1/2" | 2 | 31 1/2" | 24" |
| 3 | 43 1/2" | 11 1/2" | 3 | 43 1/2" | 24" |
| 4 | 59 1/2" | 11 1/2" | 4 | 59 1/2" | 24" |

JOB NAME: _____

LOCATION: _____

ARCHITECT: _____

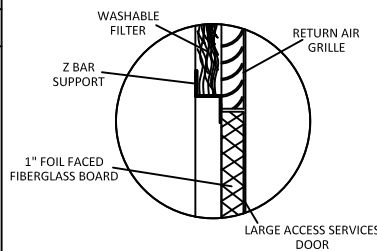
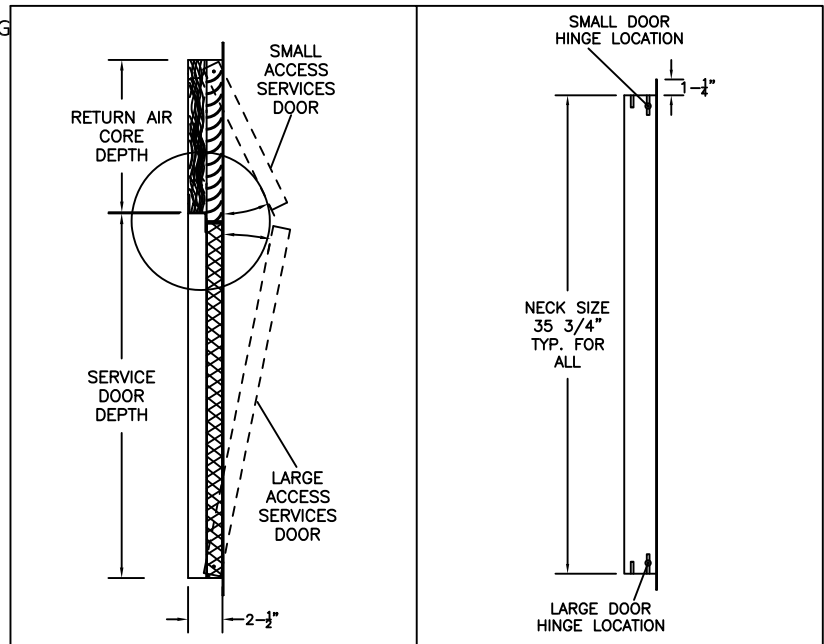
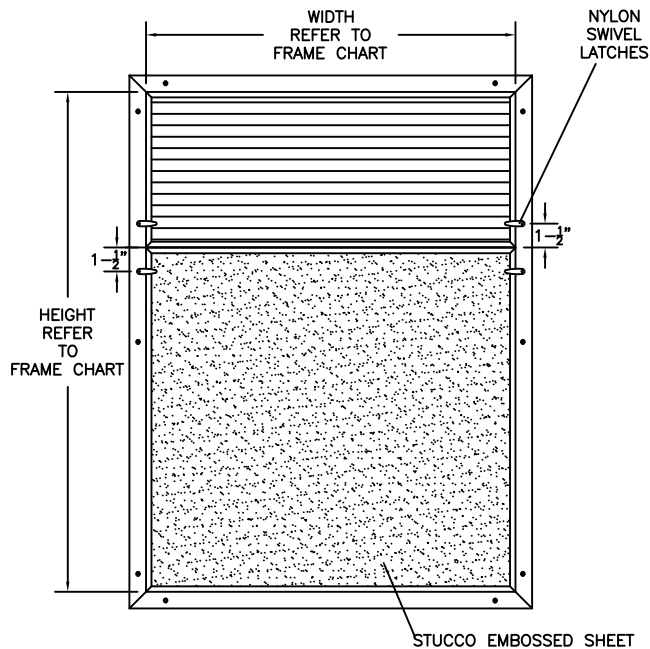
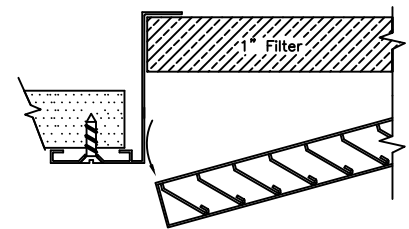
ENGINEER: _____

CONTRACTOR: _____

CONTACT GRILLE TECH INC. FOR
 ADDITIONAL INFORMATION OR WITH
 SPECIAL REQUIREMENTS.

5101 NW 36TH AVE
 MIAMI, FL 33142
 PHONE: 305-537-0053
 FAX: 305-537-0064

WEB: WWW.GRILLETECHINC.COM
 EMAIL: SALES@GRILLETECHINC.COM


STANDARD FASTENING DETAIL

DAIKIN APRFFXSQ

ACCESS PANEL WITH DOUBLE DOOR
 PRODUCT SPECIFICATIONS

NOTE: ALL DRAWINGS SUBJECT TO CHANGE WITHOUT PRIOR NOTICE.

| | | | |
|----------------|---------------|---------------------|-------------|
| DRAWN BY: MR | DATE: 8/11/17 | SCALE: NOT TO SCALE | DRAWING NO. |
| CHECKED BY: IG | DATE: 8/31/17 | REVISION: 4/29/22 | APRFFXSQ |