

STANDARD CONSTRUCTION
FRAME:

6063T5 EXTRUDED ALUMINUM
 NOMINAL WALL THICKNESS OF 0.081"
 UNIVERSAL 1.5" FLANGE

BLADES:

6063T5 EXTRUDED ALUMINUM
 NOMINAL WALL THICKNESS OF 0.081"
 SPACED AT APPROX. 1" CENTERS

FINISH:

MILL ALUMINUM (STANDARD)
 POLYESTER SKY WHITE POWDER COAT
 (OPTIONAL)

SCREEN:

BVF41 (STANDARD): INSECT SCREEN
 BVF4B (OPTIONAL): BIRD SCREEN

STANDARD VENT SIZES:

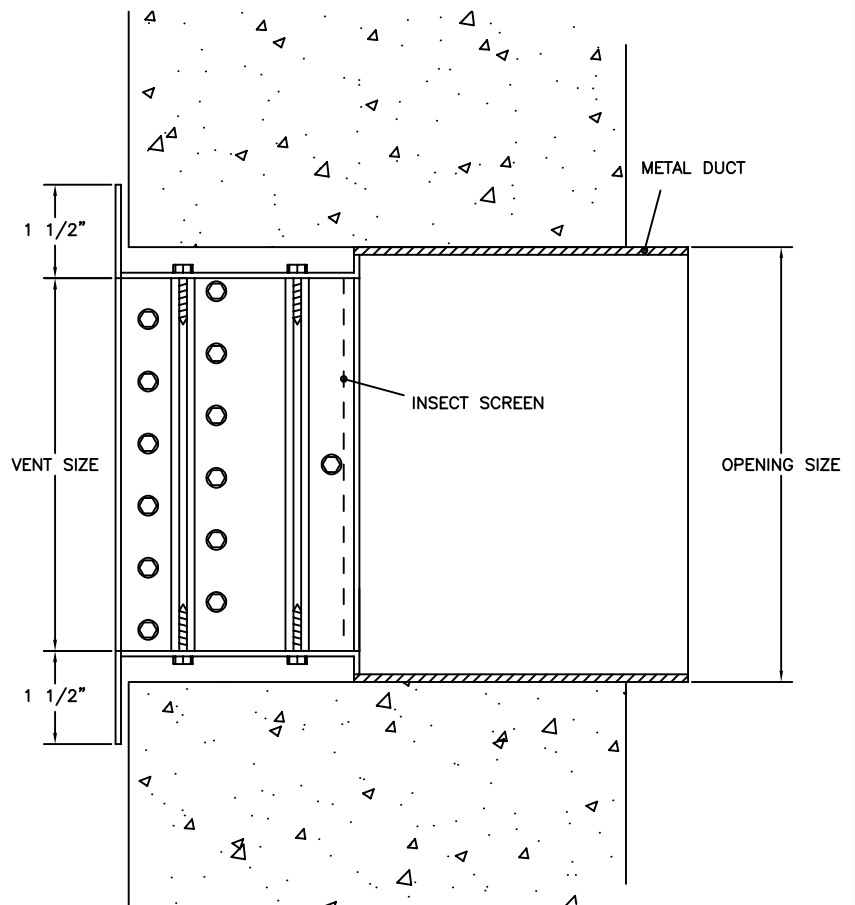
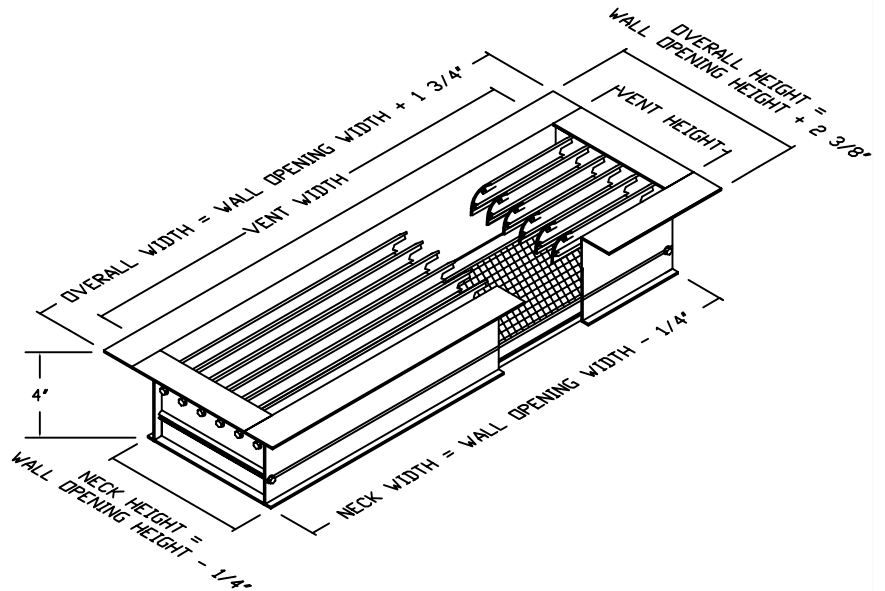
8 1/8"W X 2 3/8"H	16 1/2"W X 2 3/8"H
8 1/8"W X 4 3/4"H	16 1/2"W X 4 3/4"H
8 1/8"W X 7 3/4"H	16 1/2"W X 7 3/4"H
12"W X 2 3/8"H	16 1/2"W X 15 3/4"H
12"W X 4 3/4"H	24"W X 2 3/8"H
12"W X 7 3/4"H	24"W X 4 3/4"H
12"W X 11 3/4"H	24"W X 7 3/4"H
15 5/8"W X 7 3/4"H	32"W X 7 3/4"H
15 5/8"W X 15 3/4"H	48"W X 7 3/4"H

FEATURES

BLADE ANGLE AND OVERLAP LIMITS VISIBILITY INTO THE STRUCTURE.

BLADE DEPTH OFFERS GOOD RESISTANCE TO WATER PENETRATION.

FLANGED FACE CREATES A GOOD VENT-TO-WALL SEAL AND AN EASY CAULKING SURFACE.



JOB NAME:
LOCATION:
ARCHITECT:
ENGINEER:
CONTRACTOR:
CONTACT GRILLE TECH INC. FOR ADDITIONAL INFORMATION OR WITH SPECIAL REQUIREMENTS. 5101 NW 36TH AVE MIAMI, FL 33142 PHONE: 305-537-0053 FAX: 305-537-0064 WEB: WWW.GRILLETECHINC.COM EMAIL: SALES@GRILLETECHINC.COM

BVF41
 BRICK WALL VENT
 PRODUCT SPECIFICATIONS

NOTE: ALL DRAWINGS SUBJECT TO CHANGE WITHOUT PRIOR NOTICE.

DRAWN BY:	MR	DATE:	7/11/17	SCALE:	NOT TO SCALE	DRAWING NO.	BVF41
CHECKED BY:	IG	DATE:	7/31/17	REVISION:	7/11/17		